

BrewBench Stick

User Manual

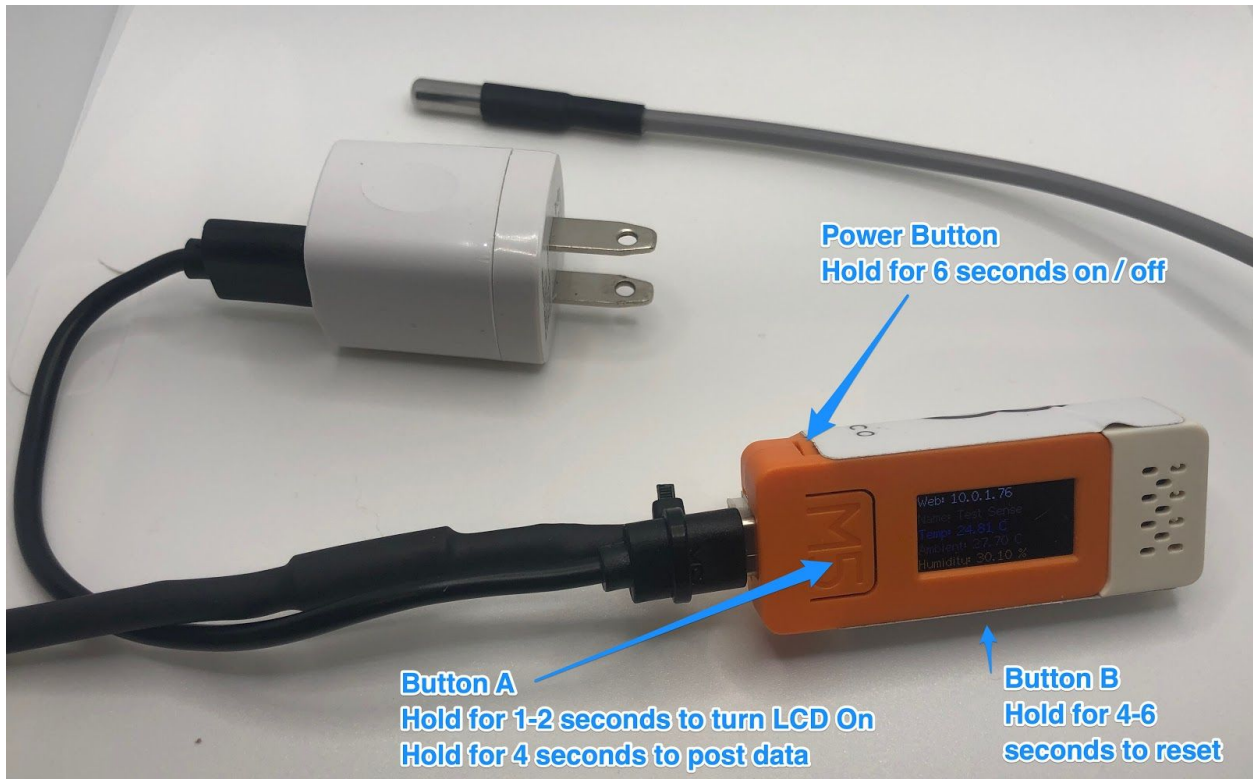
BT-1000



- Temperature (Probe)
- Ambient Temperature
- Humidity

Great for your brew house, barrel room, keg room, walk in cooler, refrigerator, glycol or fermenters.

Sensor Buttons



Sensor App

1. Download the BrewBench Monitor app to configure the sensor. <https://www.brewbench.co>.
2. Plug in the sensor, wait for the BrewBench_SETUP network to be created.
3. Open the app, click the plus sign or Add New Sensor button.
4. Connect to the BrewBench_SETUP network.
5. Return to the BrewBench Monitor app and click continue.
6. Enter Device Name and WiFi name and password for your 2.4 GHz WiFi network.
7. Click Continue then connect back to your WiFi network
8. Return to the BrewBench Monitor app and click continue.
9. Verify the temperature and Device Name on the BrewBench Stick LCD and Hold Button A to send the first reading.



Sensor Specifications

ESP32	240MHz dual-core, 600 DMIPS, 520KB SRAM, Wi-Fi, dual-mode Bluetooth
Flash Memory	4MB
Power Input	5V @ 500mA
LCD screen	0.96 inch, 80*160 Colorful TFT LCD, ST7735S
Battery	95 mAh @ 3.7V

Operating Temperature	32°F to 104°F (0°C to 40°C)
net weight	15.1g
Gross weight	33g
Product Size	48.2*25.5*13.7mm
Case Material	Plastic (PC) NOT WATERPROOF
Temperature Probe	<p>6 ft (2m) One Wire Temperature Sensor - DS18B20</p> <ul style="list-style-type: none"> • Wide temperature range: -67°F to 257°F (-55°C to +125°C) • High accuracy: ±0.5°C 14°F to 185°F (-10°C to +85°C) • WATERPROOF But cannot be put under temperature higher than 158°F (70°C) for a long time
Ambient Temperature	Range: -4°F to 140°F (-20°C to 60°C)
Humidity	Range: 20 to 95 %RH